

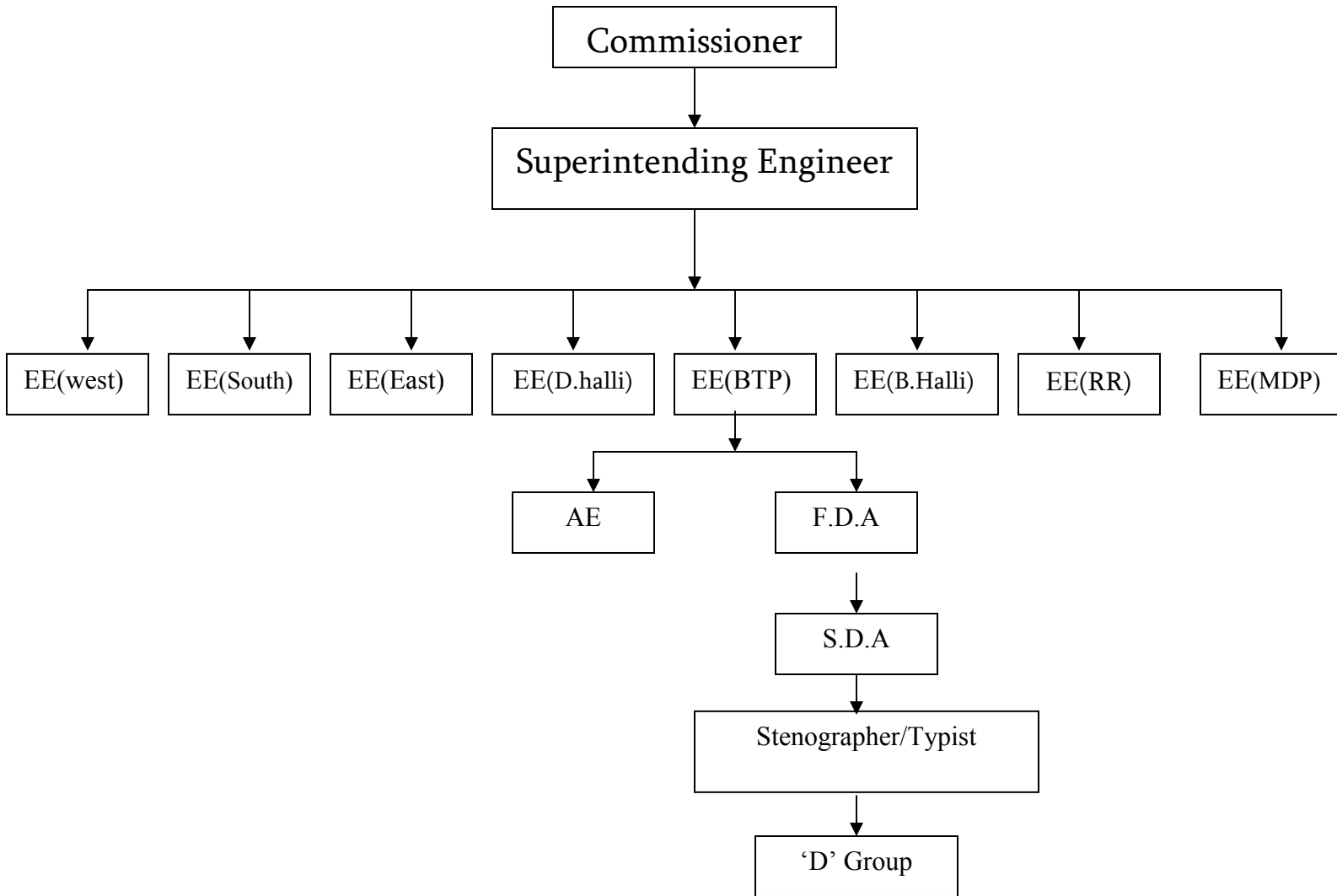
SUPERINTENDING ENGINEER, TVCC, BBMP., HEAD OFFICE

Published Under Right to Information Act-2005 Section-4

I.Particulars of its organization, functions and duties of
Superintending Engineer, Technical and Viligance Cell,
Head Office:

(A) Name of the Office: Superintending Engineer,
T.V.C.C.,
N.R.Suare, Bangalore 560 002.

(B) Organization:



(C) Functions and Duties:-

This cell work under Commissioner. On the Orders of Commissioner, this cell will inspect and forward inspection report to the Commissioner.

II. The powers and duties of its Officers and Employees:-

1. Superintending Engineer : Head of the cell, taking care of the administration of the cell. He submit the inspection reports to the Commissioner.
2. Executive Engineer : Works as per the instruction and direction of Superintending Engineer and submit Inspection reports to Superintending Engineer.
3. Assistant Engineer : Works as per the instruction of SE and Assist SE in preparation of reports/statements.
4. First Division Assistant : Works under EE(TVCC-R.R. NAGAR) takes care of the S.R's of the Employees, preparation of bills for the salaries of the official and recives complaints from call center and informed to concerned ward engineer.
5. Second Division Assistant : Works under the EE(TVCC-BTP), receives and dispatch the file to the commissioner assists FDA in day today official duty.
6. Stenographer/Typist : Works under EE(BTP-TVCC). Typing the Reports and maintains all these reports in the Computer.
7. 'D' Group : Works under the head of the department. Assist the day to day duties of Officers in this cell.

III. Procedure followed in the decision making process, including channels of Supervision and accountability.

Receiving files from the Commissioner, the files will be verified and if necessary inspect the spot. Then prepare a detailed report to the Commissioner Supervising the Officials in their day to day official duty. Issue administrative orders and bring to effect. Action to take under RTIA 2005 to give information to the public.

IV. Norms set by it for the discharge of its functions.

As per the rule in RTIA 2005 and instructions by Commissioner.

V. Rules, regulations, instructions, manuals and records, held by it or under its control or used by its employees for discharging its functions.

As per RTIA 2005 and instruction by Commissioner.

VI. Statement of the categories of documents that are held by it or under its control.

- (a) Receiving and dispatch register.
- (b) Attendance registers.
- (c) Contingency bill register.
- (d) Stock register.
- (e) Salary acquaintance registers of employees.
- (f) Cheque register.
- (g) Subject wise register.

VII. Particulars of any arrangement that exists for consultation with, or representation by, the members of the public in relation to the formulation of its policy or implementation thereof.

As per RTIA this office issue information as per the guidelines with the corporation to public.

VIII. Statement of the boards, councils, committees and other bodies consisting of two or more persons constituted as its part or for the purpose of its advice, and as to whether meetings of those boards, councils, committees and other bodies are open to the public, or the minutes of such meetings are accessible for public.

Not pertaining to this cell.

IX. Directory of Technical and Viligance Cell Officers and Employees.

Sl.no	Name & Designation	Office Address	Telephone No.
1	Sri. S. Prabhakar, Superintending Engineer, Head of the cell.	Superintending Engineer, TVCC, BBMP, N.R.Square, Bangalore-560 002.	22975516
2	Sri.Krishna, Executive Engineer, (TVCC-yelahanka)	Superintending Engineer, TVCC, BBMP, N.R.Square, Bangalore-560 002.	22975516
3	Smt. R. Malathi, Executive Engineer, (TVCC –South, Bommanahalli)	Superintending Engineer, TVCC, BBMP, N.R.Square, Bangalore-560 002.	22975516
4	Smt. N.Yamuna, Executive Engineer, (TVCC-West)	Superintending Engineer, TVCC, BBMP, N.R.Square, Bangalore-560 002.	22975516
5	Sri.H.B. Narasimha Murthy, Executive Engineer, (TVCC - East)	Superintending Engineer, TVCC, BBMP, N.R.Square, Bangalore-560 002.	22975516
6	Sri. D.A. Anwar Pasha Executive Engineer, (TVCC -Mahadevapura)	Superintending Engineer, TVCC, BBMP, N.R.Square, Bangalore-560 002.	22975516
7	Sri.Narasarama Rao, Executive Engineer, (TVCC- R.R.Nagar Dasarahalli)	Superintending Engineer, TVCC, BBMP, N.R.Square, Bangalore-560 002.	22975516
8	Sri.Krishna Murthy M, Executive Engineer, (TVCC)	Superintending Engineer, TVCC, BBMP, N.R.Square, Bangalore-560 002.	22975516
9	Sri.M.S. Ramesh Executive Engineer, (TVCC)	Superintending Engineer, TVCC, BBMP, N.R.Square, Bangalore-560 002.	22975516
10	Sri.Ramesh, Executive Engineer, (TVCC)	Superintending Engineer, TVCC, BBMP, N.R.Square, Bangalore-560 002.	22975516
11	Sri.Rangaswamy Executive Engineer, (TVCC)	Superintending Engineer, TVCC, BBMP, N.R.Square, Bangalore-560 002.	22975516

12	Sri Narasimha Shastry Executive Engineer TVCC	Superintending Engineer, TVCC, BBMP, N.R.Square, Bangalore-560 002.	22975516
13	Smt. Meghana H S Assistant Engineer, (TVCC)	Superintending Engineer, TVCC, BBMP, N.R.Square, Bangalore-560 002.	22975516
14	Sri NarasimhaMurthy First Division Assistant	Superintending Engineer, TVCC, BBMP, N.R.Square, Bangalore-560 002.	22975516
15	Sri Naveen Kumar P Second Division Assistant	Superintending Engineer, TVCC, BBMP, N.R.Square, Bangalore-560 002.	22975516
16	Sri C. Basavaraju 'D' Gruop	Superintending Engineer, TVCC, BBMP, N.R.Square, Bangalore-560 002.	22975516
17	Sri G Kumar 'D' Gruop	Superintending Engineer, TVCC, BBMP, N.R.Square, Bangalore-560 002.	22975516

x. Details of monthly salary drawn by the Officers and Employees as per rule:

Sl.no	Name and Designation	Pay Scale	Basic pay
1	Sri. S. Prabhakar, (Superintending Engineer)	18150-25050	20025
2	Sri. krishna (Executive Engineer)	18150-25050	28050
3	Smt. N. Yamuna (Executive Engineer)	18150-25050	18150
4	Smt. R. Malathi (Executive Engineer)	18150-25050	18150
5	Sri.H.B. Narasimha Murthy (Executive Engineer)	18150-25050	18150
6	Sri. D.A. Anwar Pasha (Executive Engineer)	18150-25050	18150

7	Sri.Krishna Murthy M, Executive Engineer. (TVCC)	18150-25050	18150
8	Sri.M.S. Ramesh Executive Engineer, (TVCC)	18150-25050	18150
9	Sri.Ramesh, Executive Engineer, (TVCC)	18150-25050	18150
10	Sri.Rangaswamy Executive Engineer, (TVCC)	18150-25050	18150
11	Smt Meghana H S (Assistant Engineer)	11400-21600	11400
12	Sri Narasimha Murthy (First Division Assistant)	7275-13350	7675
13	Sri P.Navin Kumar (Second Division Assistant)	5800-10500	6125
14	Sri C.Basavaraju ('D' Group)	4800-7275	6500
15	Sri g kumar ('D' Group)	4800-7275	4800

XI. The budget allocated to each of its agency, indicating the particulars of all plans, proposed expenditure and reports on disbursement made.

Grants not available.

XII. The manner of execution of subsidy programs, including the amounts allocated an the details of beneficiaries of such programs.

Not available in this Cell.

XIII. Particulars of recipients of concessions, permits or authorizations granted by it.

Not available in this Cell.

XIV. Details in respect of the information, available to or held by it, reduced in an electronic form.

In written form.

XV. Particulars of facilities available to citizens for obtaining information, including the working hours of a library or reading room, if maintained for public use.

Not pertaining to this Cell.

XVI. Names, designations and others particulars of the Public Information Officers.

1. Sri.Narasarama Rao ,ExecutiveEngineer, (TVCC- RRnagar
Dasarahalli).
2. Smt. R. Malathi, Executive Engineer, (TVCC –South, Bommanahalli).
3. Smt. N.Yamuna, Executive Engineer, (TVCC-West)
4. Sri.H.B. Narasimha Murthy, Executive Engineer, (TVCC - East)
5. Sri. D.A. Anwar Pasha Executive Engineer, (TVCC -Mahadevapura)
- 6.Sri Krishna Executive Engineer, (TVCC -Yelahanka)

XVII. Such other information as may be prescribed, and thereafter update these publications every year.

Being up dated regularly.

Superintending Engineer,
T.V.C.C., BBMP.
Bangalore.